

PLASTIC PADDLES



AC1

1 Nylon6 blade.

50 x 100 mm

Recommended density: **1,0 ÷ 1,5 kg/dm³**

Suitable for: **1" 1/2 gas - 2" 1/2 gas - 1" 1/4 gas**

Min. hole ø
39 mm

Material/weight*



AC2

3 Nylon6 blades.

120 x 65 mm

Recommended density: **0,3 ÷ 0,5 kg/dm³**

Installation with flange or from inside the silo

Min. hole ø
125 mm

Material/weight*



AC4

1 Nylon6 blade.

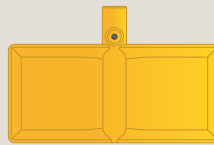
60 x 100 mm

Recommended density: **0,6 ÷ 0,9 kg/dm³**

Suitable for: **2" 1/2 gas**

Min. hole ø
65 mm

Material/weight*



AC9

1 Nylon6 blades.

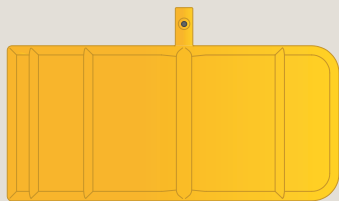
140 x 65 mm

Recommended density: **0,2 ÷ 0,4 kg/dm³**

Installation with flange or from inside the silo

Min. hole ø
145 mm

Material/weight*



AC13

2 Nylon6 blades.

304 x 142 mm

Recommended density: **0,02 ÷ 0,01 kg/dm³**

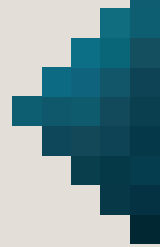
Installation with flange or from inside the silo

Min. hole ø
305 mm

Material/weight*



* **Very light:** e.g. polystyrene - **Light:** e.g. ash - **Medium:** e.g. corn, flour, coffee grains, wheat - **Heavy:** e.g. gravel



STAINLESS STEEL PADDLES



AC1-INOX

1 AISI 304 stainless steel blade.

140 x 150 mm

Recommended density: **0,1 ÷ 0,3 kg/dm³**

Installation with flange or from inside the silo

Suitable for: **1" 1/4 gas**

Min. hole ø
39 mm

Material/weight*



AC3-INOX

4 AISI 304 stainless steel blades.

100 x 60 mm

Recommended density: **0,3 ÷ 0,5 kg/dm³**

Installation with flange or from inside the silo

Min. hole ø
105 mm

Material/weight*



AC4-INOX

1 AISI 304 stainless steel blade.

60 x 100 mm

Recommended density: **0,6 ÷ 0,9 kg/dm³**

Suitable for: **2" 1/2 gas**

Min. hole ø
65 mm

Material/weight*



AC5-INOX

4 AISI 304 stainless steel blades.

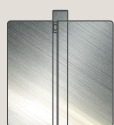
138 x 50 mm

Recommended density: **0,2 ÷ 0,4 kg/dm³**

Installation with flange or from inside the silo

Min. hole ø
140 mm

Material/weight*



AC5L-INOX

4 AISI 304 stainless steel blades.

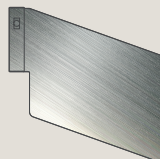
100 x 110 mm

Recommended density: **0,2 ÷ 0,4 kg/dm³**

Installation with flange or from inside the silo

Min. hole ø
100 mm

Material/weight*



AC6-INOX

1 AISI 304 stainless steel blade.

140 x 150 mm

Recommended density: **0,1 ÷ 0,3 kg/dm³**

Installation with flange or from inside the silo

Min. hole ø
110 mm

Material/weight*



* **Very light:** e.g. polystyrene - **Light:** e.g. ash - **Medium:** e.g. corn, flour, coffee grains, wheat - **Heavy:** e.g. gravel



STAINLESS STEEL PADDLES



AC7-INOX

1 AISI 304 stainless steel blade.

60 x 145 mm

Recommended density: **0,3 ÷ 0,5 kg/dm³**

Suitable for: **2" 1/2 gas**

Min. hole ø
65 mm

Material/weight*



AC8-INOX

4 AISI 304 stainless steel ropes.

Diameter: **260 mm**

Recommended density: **> 1,5 kg/dm³**

Installation with flange or from inside the silo

Min. hole ø
100 mm

Material/weight*



AC9-INOX

2 AISI 304 stainless steel blades.

140 x 65 mm

Recommended density: **0,2 ÷ 0,4 kg/dm³**

Installation with flange or from inside the silo

Min. hole ø
145 mm

Material/weight*



AC10-INOX

2 AISI 304 stainless steel blades.

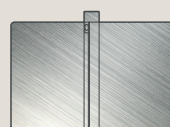
70 x 135 mm

Recommended density: **0,6 ÷ 1,0 kg/dm³**

Installation with flange or from inside the silo
Suitable for: **2" 1/2 gas**

Min. hole ø
75 mm

Material/weight*



AC11-INOX

4 AISI 304 stainless steel blades.

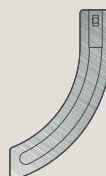
150 x 110 mm

Recommended density: **0,1 ÷ 0,3 kg/dm³**

Installation with flange or from inside the silo

Min. hole ø
155 mm

Material/weight*



AC12-INOX

1 AISI 304 stainless steel blade.

160 x 95 mm - Width: 30 mm

Recommended density: **0,8 ÷ 1,0 kg/dm³**

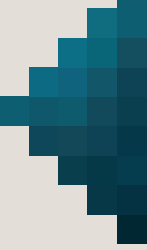
Suitable for: **1" gas - 1" 1/4 gas - 1" 1/2 gas - 2" 1/2 gas**

Min. hole ø
30 mm

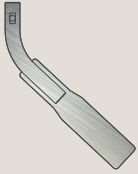
Material/weight*



* **Very light:** e.g. polystyrene - **Light:** e.g. ash - **Medium:** e.g. corn, flour, coffee grains, wheat - **Heavy:** e.g. gravel



STAINLESS STEEL PADDLES



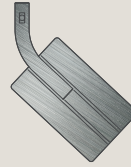
AC14-INOX

1 AISI 304 stainless steel blade.
130 x 150 mm - Width: 28 mm
 Recommended density: **0,3 ÷ 0,5 kg/dm³**

Suitable for: **1" gas** - **1" 1/4 gas** - **1" 1/2 gas** - **2" 1/2 gas**

Min. hole ø
30 mm

Material/weight*



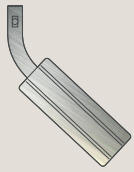
AC15-INOX

1 AISI 304 stainless steel blade.
127 x 157 mm - Width: 68 mm
 Recommended density: **0,3 ÷ 0,5 kg/dm³**

Suitable for: **2" 1/2 gas**

Min. hole ø
70 mm

Material/weight*



AC16-INOX

1 AISI 304 stainless steel blade.
118 x 150 mm - Width: 40 mm
 Recommended density: **0,3 ÷ 0,5 kg/dm³**

Suitable for: **1" 1/2 gas** - **2" 1/2 gas**

Min. hole ø
42 mm

Material/weight*



AC17-INOX

4 AISI 304 stainless steel blades.
70 x 100 mm
 Recommended density: **0,4 kg/dm³**

Suitable for: **2" 1/2 gas**

Min. hole ø
72 mm

Material/weight*



AC18-INOX

4 AISI 304 stainless steel blades.
70 x 50 mm
 Recommended density: **0,7 kg/dm³**

Suitable for: **2" 1/2 gas**

Min. hole ø
72 mm

Material/weight*



* **Very light:** e.g. polystyrene - **Light:** e.g. ash - **Medium:** e.g. corn, flour, coffee grains, wheat - **Heavy:** e.g. gravel